

Apartment Type	Monthly Rate
Semiprivate	\$ 2,910
Studio I	\$ 3,605
Studio II	\$ 3,810
One Bedroom I	\$ 4,430
One Bedroom II	\$ 4,535
One Bedroom III	\$ 4,685
Level One: Minimum Assistance	Included
Level Two: Moderate Assistance	\$ 650/month
Level Three: Maximum Assistance	\$ 950/month
Second Person Fee	\$ 750/month
Medication Supervision Fee: Level I	\$ 250/month
Medication Supervision Fee: Level II	\$ 350/month
Meal Assistance Program	\$ 200/month

GENERAL COMMUNITY INFORMATION

Application Fee (non-refundable)	\$ 2,000
----------------------------------	----------

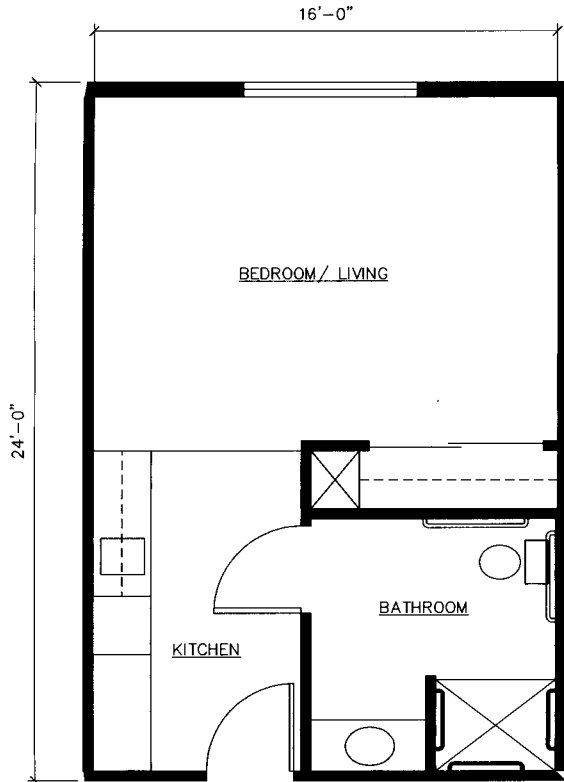
Rates based on single occupancy and are subject to change.



220 Collins Industrial Way
Lawrenceville, GA 30043
(678) 377-8191
TheBridgeatLawrenceville.com

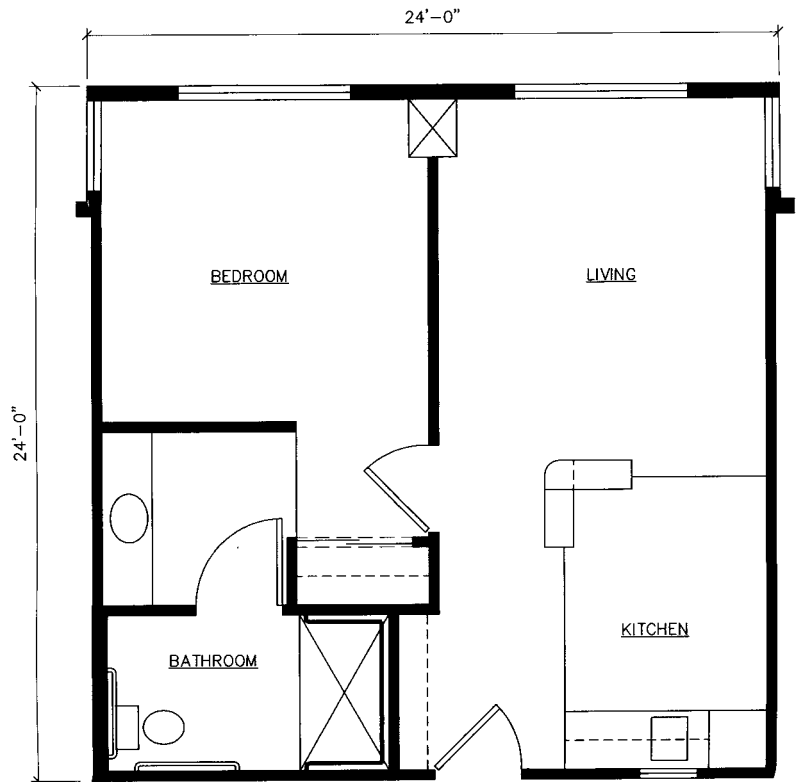
STUDIO

Starting at 384 sq. ft.



ONE BEDROOM

Starting at 576 sq. ft.



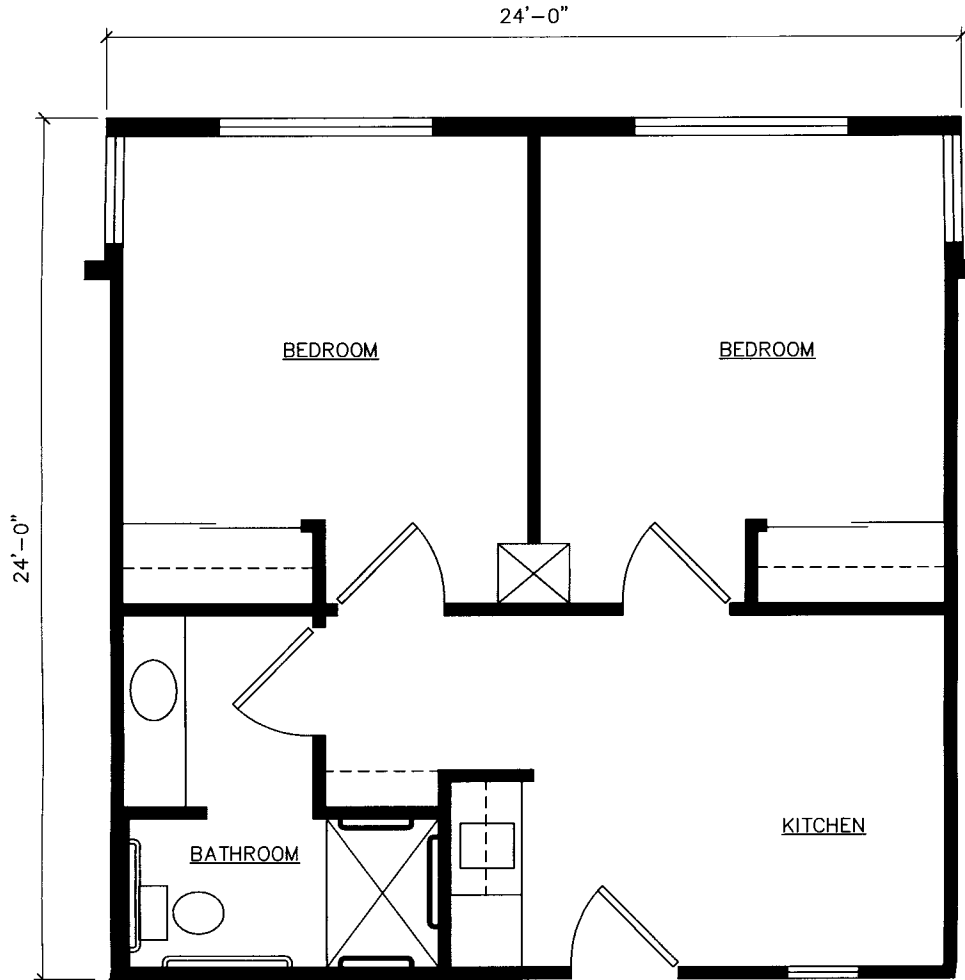
THE BRIDGE
AT LAWRENCEVILLE
A SENIOR LIVING COMMUNITY

220 Collins Industrial Way
Lawrenceville, GA 30043
(678) 377-8191
TheBridgeatLawrenceville.com

Floor Plans

SEMIPRIVATE

Starting at 576 sq. ft.



THE BRIDGE
AT LAWRENCEVILLE
A SENIOR LIVING COMMUNITY

220 Collins Industrial Way
Lawrenceville, GA 30043
(678) 377-8191
TheBridgeatLawrenceville.com

Cost Worksheet

	<u>STAYING AT HOME</u>	<u>THE BRIDGE</u>
Rent/Mortgage	\$ _____	\$ _____
Meals	\$ _____	\$ Included
Real Estate Taxes	\$ _____	\$ Included
Insurance	\$ _____	\$ Included
Electricity	\$ _____	\$ Included
Water/Sewer	\$ _____	\$ Included
Gas/Heating	\$ _____	\$ Included
Lawn Care	\$ _____	\$ Included
Other Home Maintenance	\$ _____	\$ Included
Transportation	\$ _____	\$ Included
At-Home Assistance	\$ _____	\$ Included
TOTAL	\$ _____	\$ _____



220 Collins Industrial Way
Lawrenceville, GA 30043
(678) 377-8191
TheBridgeatLawrenceville.com

SERVICES

- Non-denominational worship services and Bible studies
- 24-hour emergency response system monitored by on-site staff
- All utilities included except telephone
- Daily and weekly housekeeping services
- Three restaurant-style meals served daily
- Scheduled transportation
- Active, recreational and wellness programs
- Simple reminder service for scheduled meals, appointments and activities
- Assistance scheduling medical appointments
- Regular monitoring for general health and well-being
- Monthly blood pressure, weight and nutritional status checks
- Assistance with activities of daily living including bathing, dressing, grooming and medication management
- Complimentary tray service during periods of temporary illness
- Apartment maintenance
- Snacks and refreshments from our café

AMENITIES

- Convenient monthly leasing
- Residents' choice of apartment floorplans
- Exercise room
- Library
- Community dining room
- Activities room
- Arts and crafts center
- Hair salon and barber shop
- Wellness center
- Attractively decorated homelike environment
- Beautifully landscaped courtyard
- Cable-ready TV hookup in each apartment
- Private dining room



220 Collins Industrial Way
Lawrenceville, GA 30043
(678) 377-8191
TheBridgeatLawrenceville.com

When Experience Matters

Lawrenceville, Georgia, is a city steeped in history. Chartered in 1821, Lawrenceville was named for Captain James Lawrence who ordered his crew to, “Tell the men to fire faster and not give up the ship!” during a Revolutionary War battle in 1813. Now, Lawrenceville is home to a vibrant historic downtown featuring specialty shops, restaurants and museums.

Lawrenceville is also known for its beauty and has been nicknamed “Crape Myrtle City.” It is within this lovely setting that you will find The Bridge at Lawrenceville. Here you will discover more than our beautiful facilities and extensive range of services. You will find a warm, dedicated staff committed to creating a community you will be delighted to call home. With no buy-in fees and a convenient month-to-month lease, our residents have flexibility and freedom should their needs change.

Our unrivaled amenities and activities are available to assist you in every aspect of your daily life. We welcome the opportunity to introduce you to our services and to show you how The Bridge at Lawrenceville can enhance your life.

The Bridge at Lawrenceville is a member of the Century Park family. Century Park Associates is affiliated with Life Care Centers of America, a nationwide health care company. With headquarters in Cleveland, Tennessee, Century Park Associates manages more than 40 senior living communities in 20 states. For more information about Century Park, visit CenturyPA.com.

Life Care Centers of America, Inc., and Century Park Associates do not discriminate on the basis of race, color, national origin, age, sex, religion or disability in admission or access to, or treatment or employment in, its programs and activities.



220 Collins Industrial Way
Lawrenceville, GA 30043
(678) 377-8191
TheBridgeatLawrenceville.com