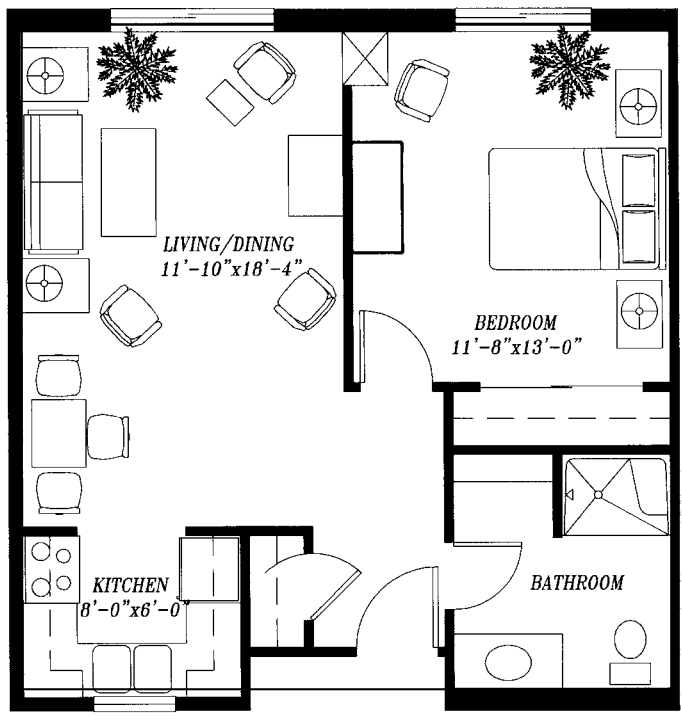


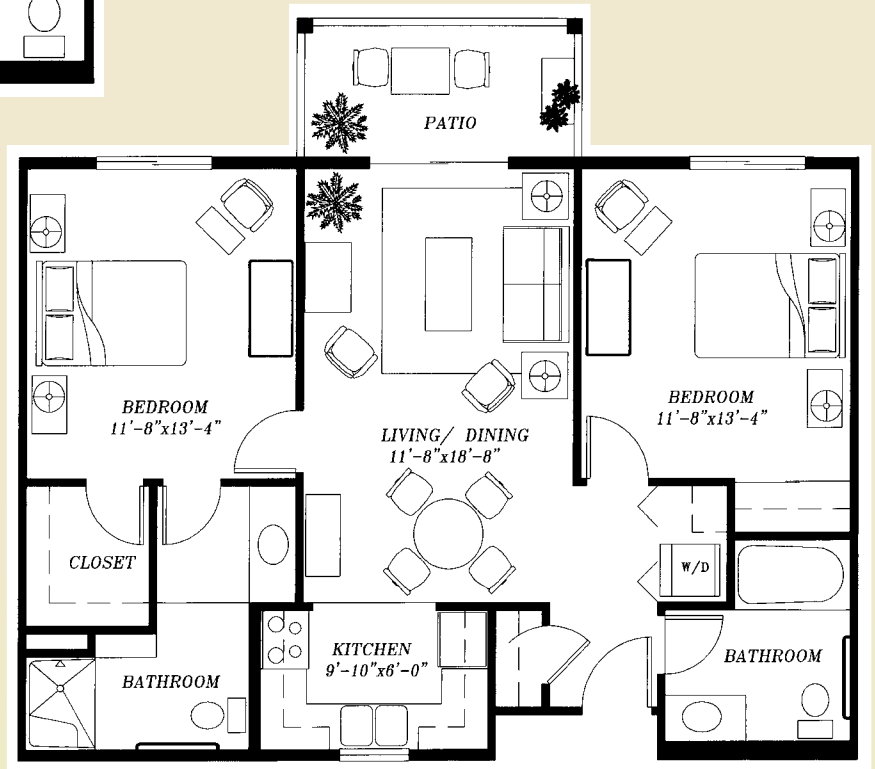
One Bedroom

576 sq. ft.



Two Bedroom

876 sq. ft.

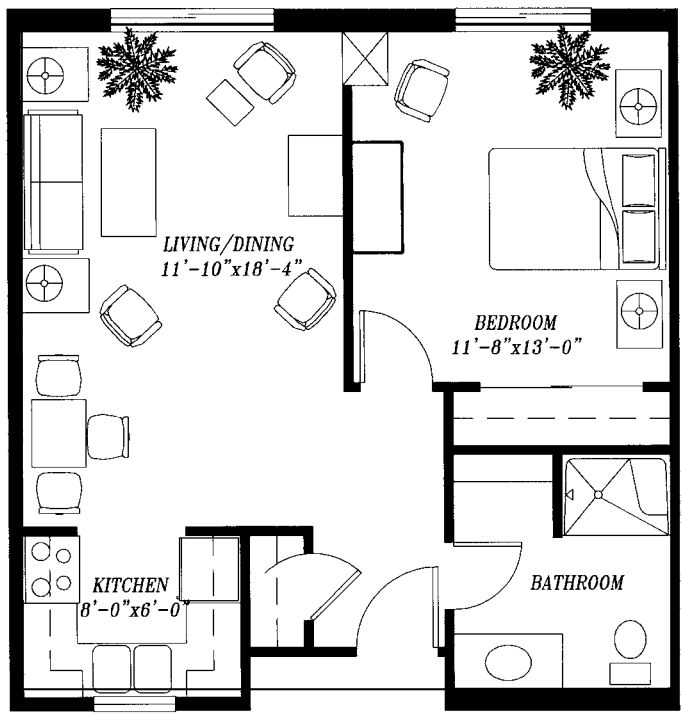


HARBOR PLACE
AT PORT ST. LUCIE
A CENTURY PARK COMMUNITY

3700 SE Jennings Road
Port St Lucie, FL 34952
(772) 337-4330
PtStLucieHarborPlace.com

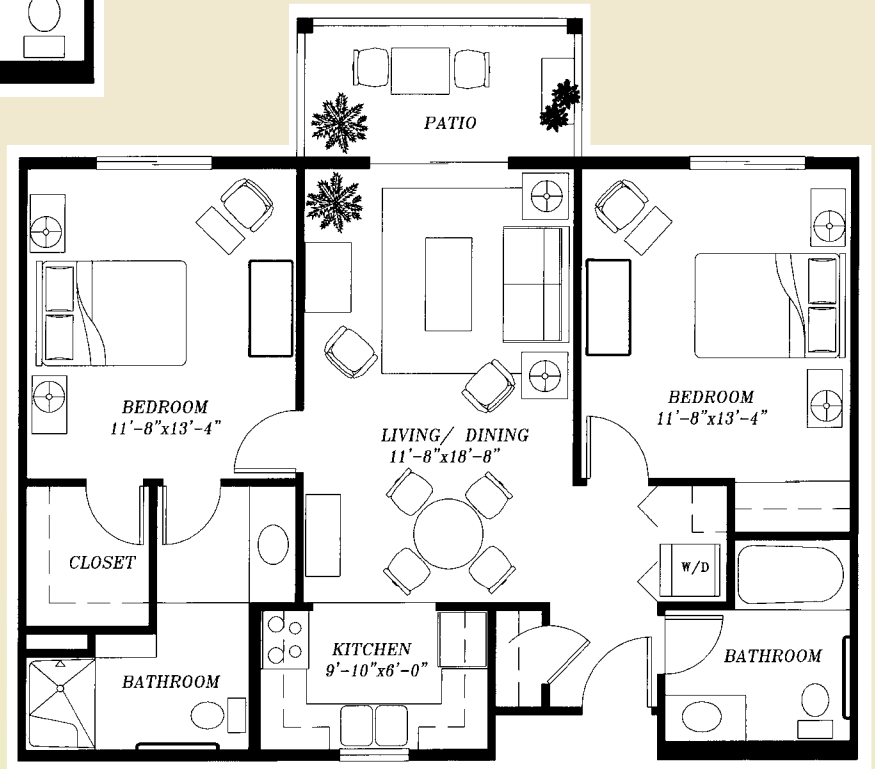
One Bedroom

576 sq. ft.



Two Bedroom

876 sq. ft.

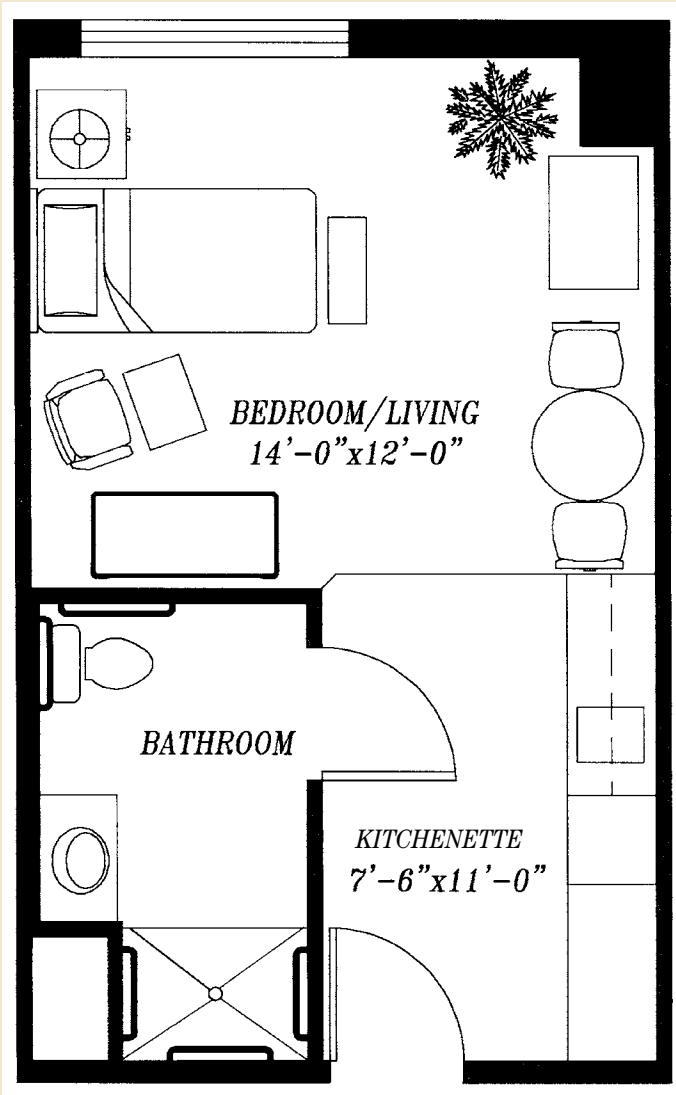


HARBOR PLACE
AT PORT ST. LUCIE
A CENTURY PARK COMMUNITY

3700 SE Jennings Road
Port St Lucie, FL 34952
(772) 337-4330
PtStLucieHarborPlace.com

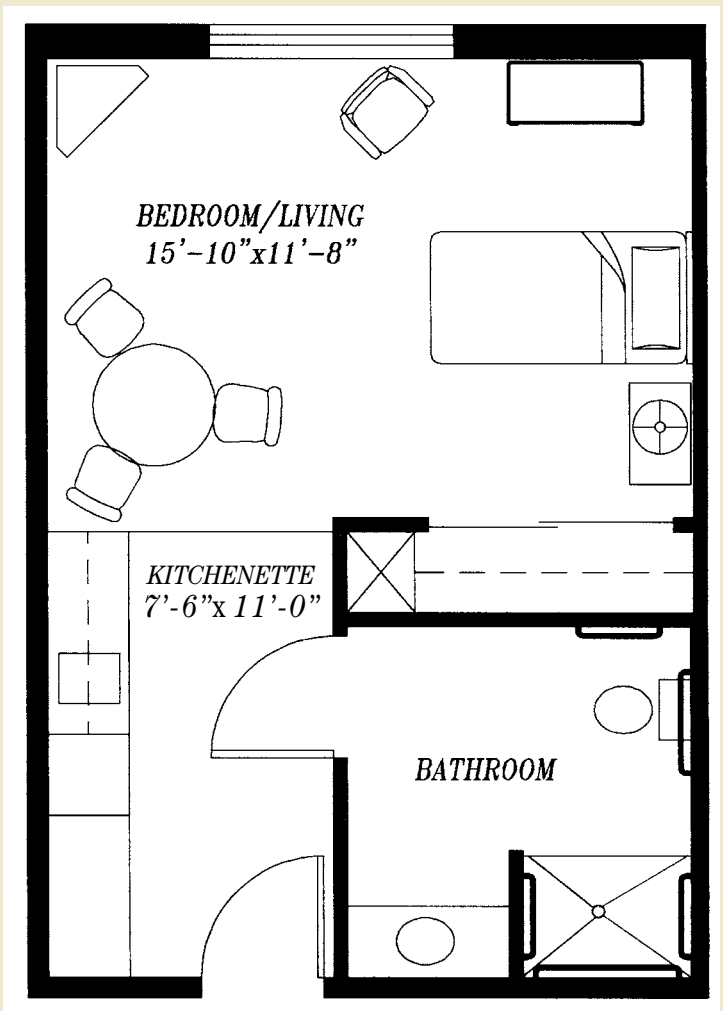
Studio

310 sq. ft.



Studio Deluxe

378 sq. ft.

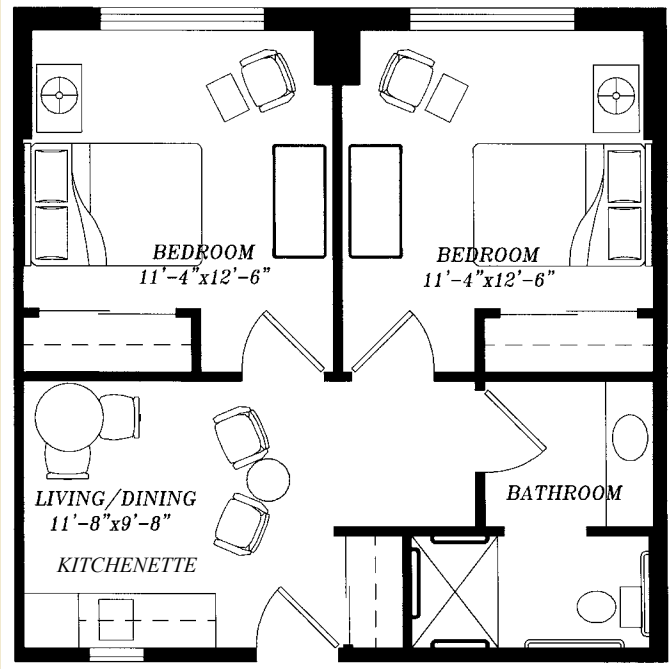


HARBOR PLACE
AT PORT ST. LUCIE
A CENTURY PARK COMMUNITY

3700 SE Jennings Road
Port St Lucie, FL 34952
(772) 337-4330
PtStLucieHarborPlace.com

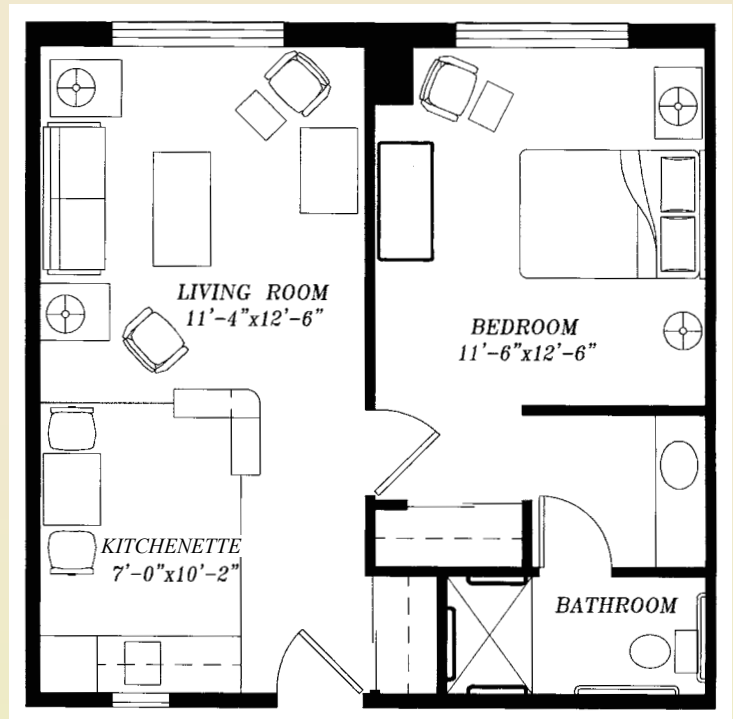
Semi-private

576 sq. ft.



One-bedroom

525 sq. ft.



HARBOR PLACE
AT PORT ST. LUCIE
A CENTURY PARK COMMUNITY

3700 SE Jennings Road
Port St Lucie, FL 34952
(772) 337-4330
PtStLucieHarborPlace.com